

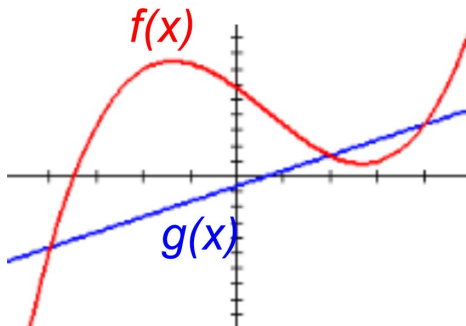
Solving Polynomial Inequalities

1. Set equal to zero with a _____
 2. Factor and solve for roots.
 3. Plot zeros on a number line. Test points in each region to find solution intervals.
 4. Write answers in _____.
-

Ex. 1) $x^4 < 16$

Ex. 2) $4x^3 \geq 12x^2$

$f(x) > g(x)$



Solving Polynomial Inequalities

1. Set equal to zero with a _____
 2. Factor and solve for roots.
 3. Plot zeros on a number line. Test points in each region to find solution intervals.
 4. Write answers in _____.
-

Ex. 1) $x^4 < 16$

Ex. 2) $4x^3 \geq 12x^2$

$f(x) > g(x)$

